



ECOVORTEK

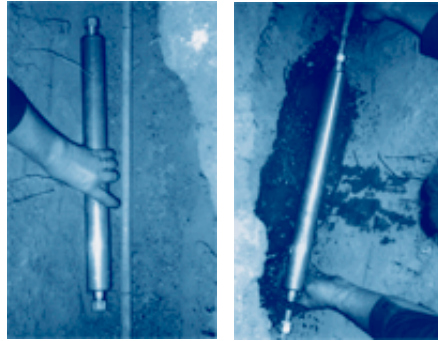
PUTTING LIFE BACK  
INTO WATER

## Ecovortek Universal Unit

### Instructions for Installation

#### Installation instructions for water mains

Water can flow in either direction through the Universal Unit.



#### Below ground installation:

1. Choose a location at least one and half metres away from any electricity source eg mains supply or appliance such as an electric motor or pump. Ensure that the earth for any electricity supply for the building is not attached to the water piping.
2. Turn off the water supply.
3. If needed excavate the site to expose the existing piping.
- 4a. The 20 mm Unit can be fitted to a 20 mm (3/4") copper pipe with "kinko" nuts or Philmac universal transition couplers.

Cutting points: Place the Unit against the pipe where it is to be installed. Using a marker, mark the full length of the basic Unit (ie with out fittings) on the pipe. If Philmac universal transition couplers are used refer to installation procedure in 4b below. The Unit is to be installed in-line between the two marks on the pipe. The pipe should not protrude into the Unit after installation.

Fixing points: Mark two lines on the pipe approx 30 mm outside the two cutting points. Once the pipe is cut, these marks should be clearly visible and used as a guide to enable the Unit to be centred between the cuts and hence not allowing the pipe to protrude into the Unit.

- 4b. The 25 mm Unit can be fitted to a 20 mm (3/4") and 25 mm (1") pipe material (including copper, PVC, lead or galvanised iron) with " Philmac universal transition couplers.

Cutting points: Place the Unit against the pipe where it is to be installed. Using a marker, mark the full length (including spigot ends) of the Unit on the pipe. Increase the distance between the two lines, by twice the dimension of the stop indicator on the Universal Transition Coupler and mark another line. The Unit is to be installed in-line equally between the two wider marks on the pipe.

Fixing position: Mark two lines on the pipe approx 100 mm outside the two cutting points. Once the pipe is cut, these marks should be clearly visible and used as a guide to enable the Unit to be centred between the cuts and hence not allowing the pipe to protrude into the Unit.

5. Cut the copper pipe with a hacksaw or a tube cutter at the two cutting points.
6. Remove any burrs & clean the remaining pipe 50 mm from each end with a cloth.
7. Fit in Line. The unit can be installed in either direction. Fit the "kinko" nuts using thread tape or the universal transition couplers to the Ecovortek Unit first and place it equally between the marking points on the pipe and tighten.
8. Turn the water back on & ensure there is no leaks.
9. Backfill soil around the unit.

#### Above ground installation

Where it is necessary to install the unit above ground the following precautions should be undertaken.

1. Follow the instructions above that relate to fitting the Unit below ground ie Nos 1, 2, 4, 5, 6, 7 and 8.
2. The Unit must be protected from extreme climatic temperatures (see "Attention" below).



**ECOVORTEK**

.....  
**PUTTING LIFE BACK  
INTO WATER**

### **Attention**

This unit contains magnets and therefore should not be stored or permanently installed near sensitive electrical devices such as video recorders or computer disks.

Ecovortek Units must be located at least one and half metres away from any electro-magnetic field.

Please ensure that the earth for the electricity supply for the house or building is not attached to the water piping.

The unit should be protected from and must not be exposed to temperatures below 1°C and above 50°C.

Hygiene, installation and appropriate use of the Ecovortek Units are the sole responsibility of the purchaser. Ecovortek Pty Ltd accepts no liability if the purchaser fails in this responsibility.

### **Please enjoy your Ecovortek Water Units**

Your Ecovortek Unit is manufactured from the highest quality materials to provide you with many years of maintenance free use.

None of the materials will contaminate water in any way nor change its chemical content but the combined technology of the different processes will help reconstruct water so that it has increased benefits for people, animals and plants.

The Ecovortek Universal Unit is designed to service areas using potable water of medium flow, (eg 20 litres per minute up to 200 litres per minute) such as homes and gardens, commercial premises such as hotels, and offices, light industry, agricultural applications such as hydroponics, horticulture and viticulture.

ECOVORTEK Pty Ltd  
ABN 62 007 894 304  
PO Box 1132, STIRLING, SA 5152  
Phone 61 8 8388 5611  
Fax 61 8 8338 5663  
Email: [info@ecovortek.com](mailto:info@ecovortek.com)

Ecovortek Guarantee